

## Quadrant I-5 Corporate Park

**Building A**  
728 134th Street SW  
Everett, WA

Suite 207: 6,508 RSF (divisible)  
Suite 213: 1,985 RSF

.....

**Building B**  
808 134th Street SW  
Everett, WA

Suite 109B: 3,583 RSF

.....

High quality office space

.....

3.4/1,000 SF free parking

.....

Conveniently located near I-5  
and I-405

.....

Transit Center within easy  
walking distance

.....

Wireless hot spots in lobby &  
conference room

.....

Avanti Markets offers tenants  
quick and convenient fresh food  
options 24/7

.....

Building conference room

.....

Updated landscaping

.....

Exterior signage negotiable

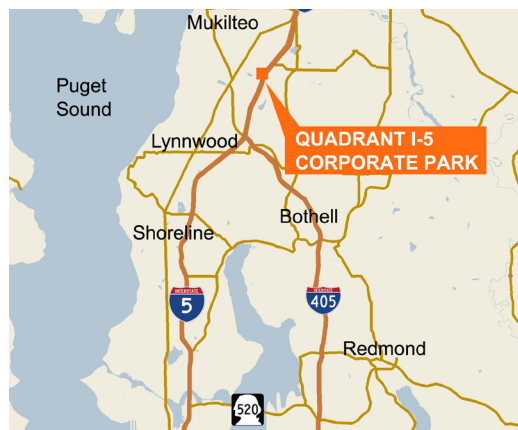
.....

Territorial Cascade Range views

.....



### Location



### Contact

**Ken Hirata**  
206.296.9625  
khirata@kiddermathews.com

.....

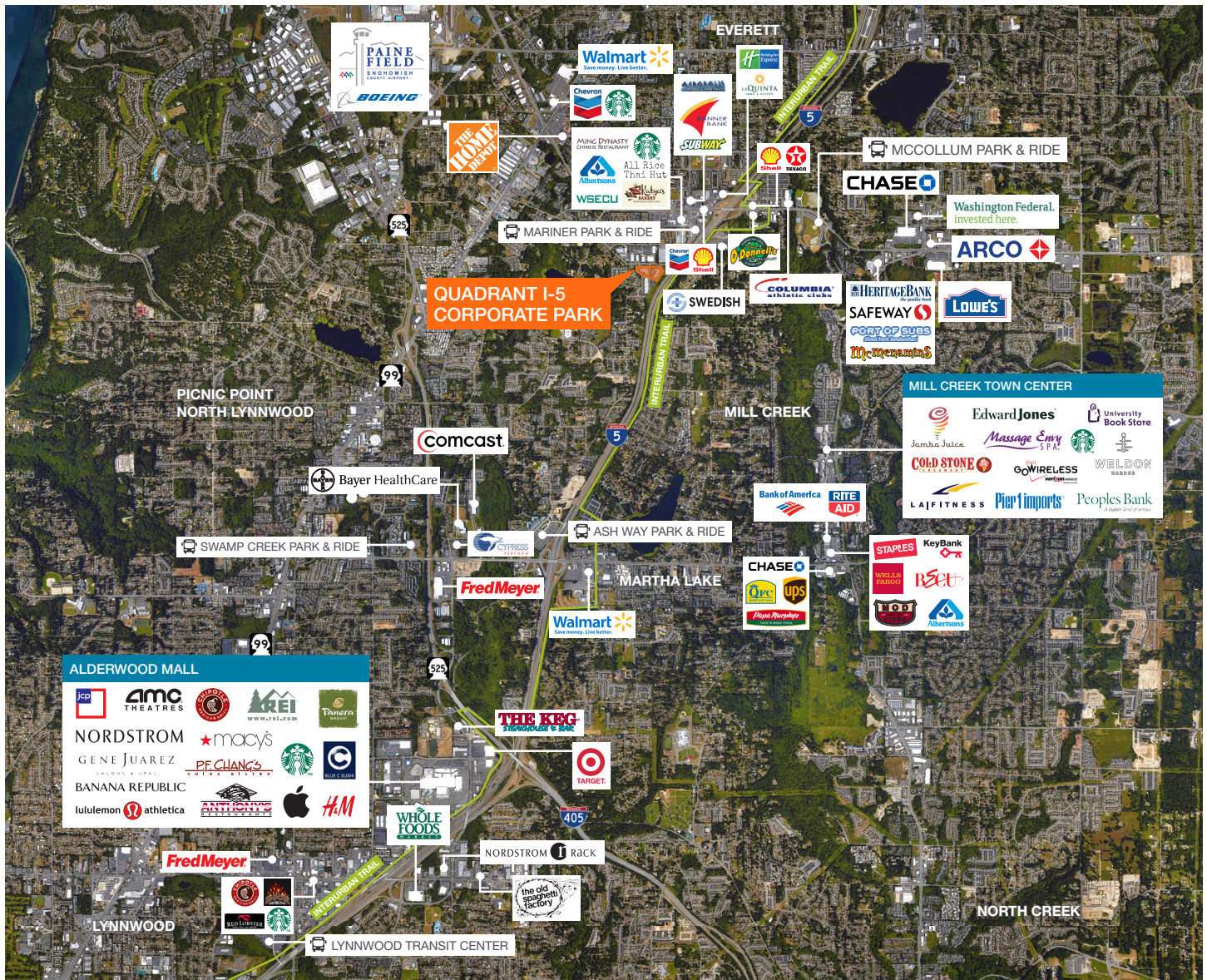
**Todd Battison**  
206.296.9621  
toddb@kiddermathews.com

.....

[quadi5corporatemark.com](http://quadi5corporatemark.com)



## Quadrant I-5 Corporate Park | Building A + B



### Contact

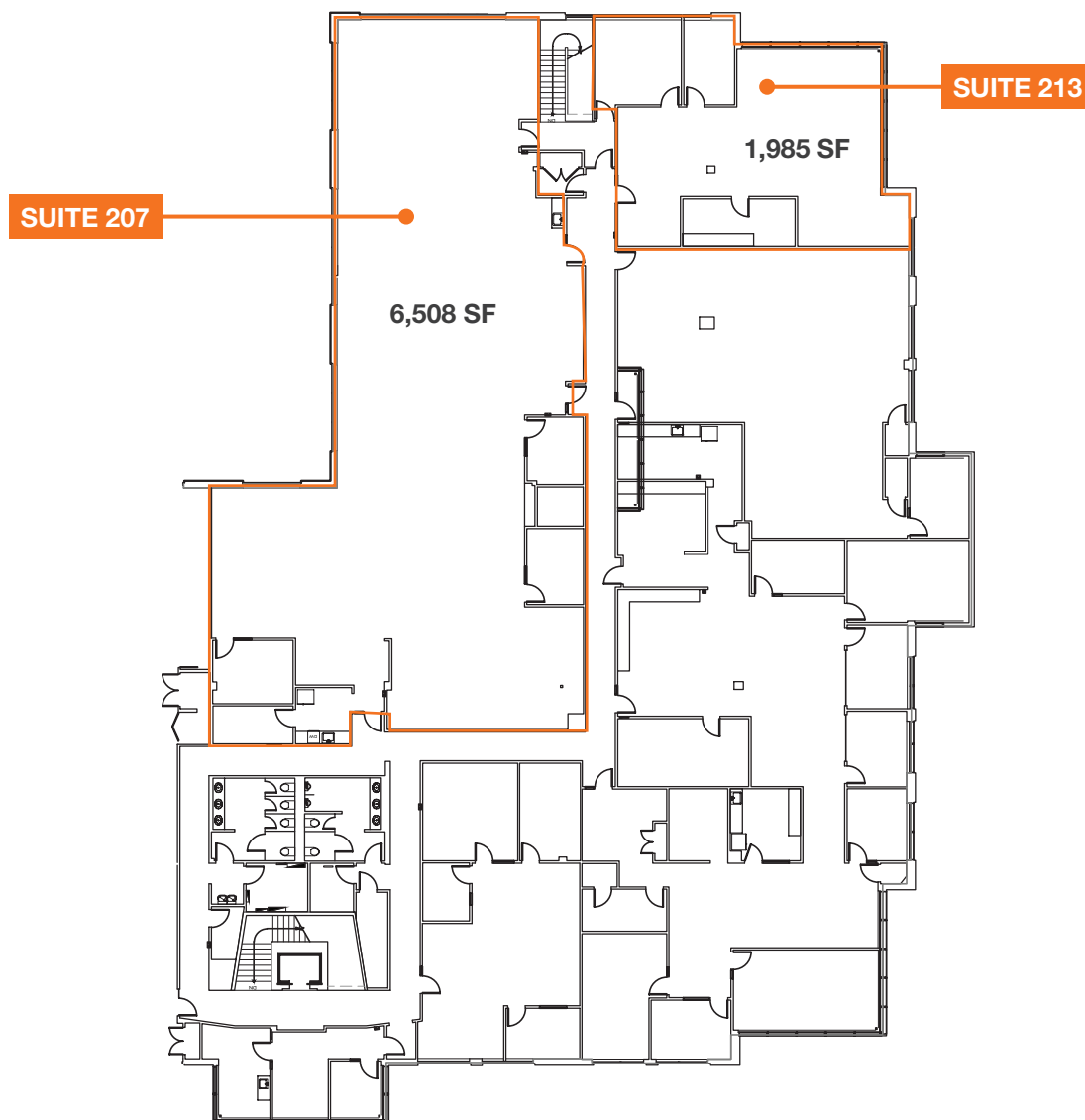
**Ken Hirata**  
206.296.9625  
khirata@kiddermathews.com

**Todd Battison**  
206.296.9621  
toddb@kiddermathews.com

[quadi5corporatepark.com](http://quadi5corporatepark.com)

## Quadrant I-5 Corporate Park | Building A

First Floor: Suite 207 - 6,508 RSF (divisible), Suite 213 - 1,985 RSF



### Contact

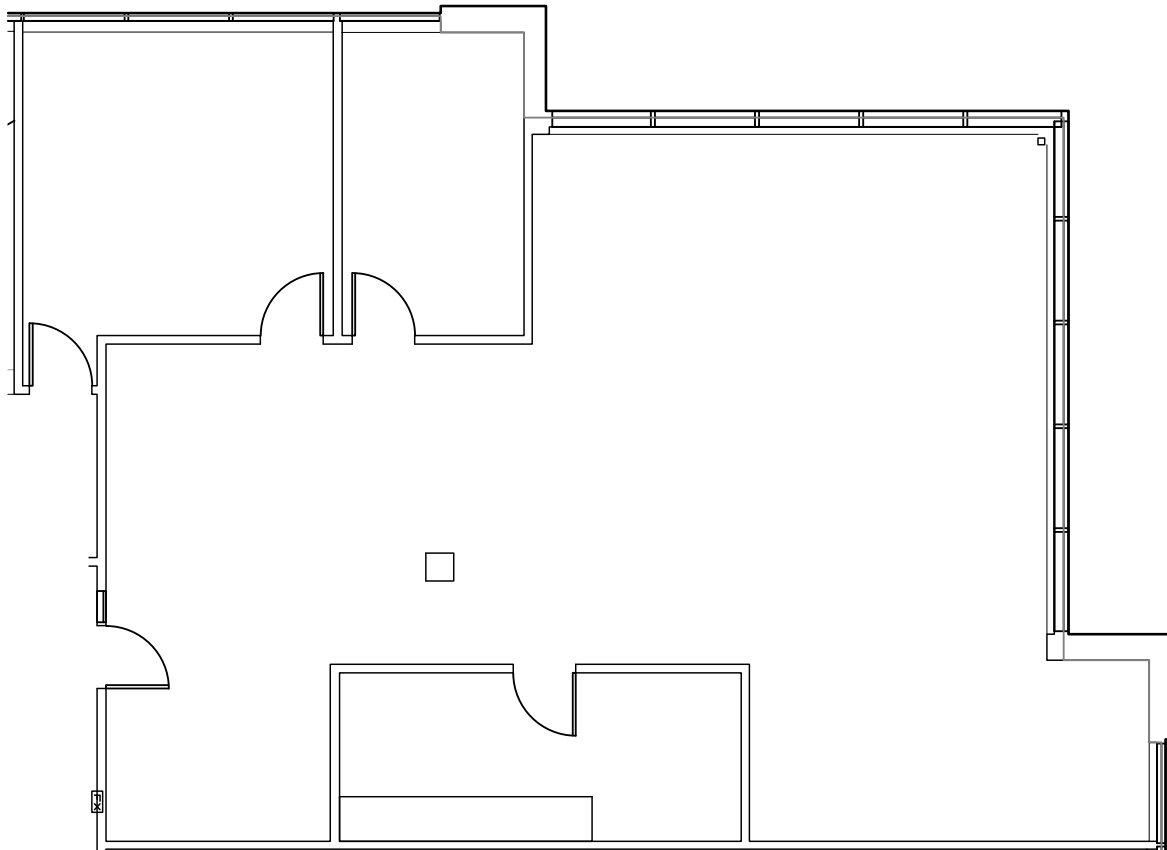
**Ken Hirata**  
206.296.9625  
khirata@kiddermathews.com

**Todd Battison**  
206.296.9621  
toddb@kiddermathews.com

[quadi5corporatepark.com](http://quadi5corporatepark.com)

## Quadrant I-5 Corporate Park | Building A

First Floor: Suite 213 - 1,985 RSF



### Contact

**Ken Hirata**  
206.296.9625  
khirata@kiddermathews.com

**Todd Battison**  
206.296.9621  
toddb@kiddermathews.com

[quadi5corporatepark.com](http://quadi5corporatepark.com)



## Quadrant I-5 Corporate Park | Building B

First Floor: Suite 109B - 3,583 RSF



### Contact

**Ken Hirata**  
206.296.9625  
khirata@kiddermathews.com

**Todd Battison**  
206.296.9621  
toddb@kiddermathews.com

[quadi5corporatepark.com](http://quadi5corporatepark.com)